



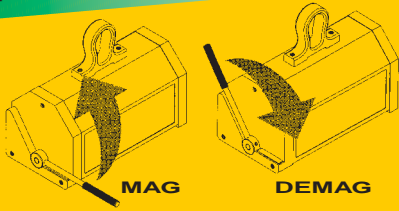
MaxX[®]

The lifters of the ultimate generation

The load is held only by the power of the permanent magnets with no power supply from the mains.

Unbeatable features and performance for a great engineering development.

MaxX activation and deactivation phases.
The simplicity of a single move



Simply turning the handle MaxX get activated or deactivated, A self-locking device prevents any possible accidental deactivation of the handle when in the MAG position.

Safe power

High-energy permanent magnets ensure great concentrated and constant power for an indefinite period. The 3:1 safety factor of the recommended load to the test load ensures optimal working conditions even with substantial operating air gaps. The high magnetic strength of the MaxX is shown by the strong resistance to operate de handle when load conditions are not perfect. That's how MaxX gives warning of potential danger.



Reliability

The only moving part, the rotor, has its fulcrum on ball bearings and doesn't develop any physical contact during rotation.

Nickel coating of all steel parts prevents rust formation, improves component life and allows better surface hardness in the polar area to maintain optimal load contact conditions and protection of machined surfaces.

Concentrated power

The 'neutral crown' circuit, basic patent of all Tecnomagnete products, allows channeling the magnetic flow through the polar area only, i.e. where the power is needed this ensure steady, optimal performance whilst a total lack of magnetic dispersion avoids undesired attraction from adjacent loads.

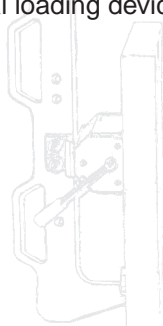
Compact and Robust

Test load up to 150 times the weight of the lifter body (MaxX250). This incredible power to weight ratio is provided by the Tecnomagnete double-magnet circuit (rotor and stator) and the revolutionary monoblock construction.

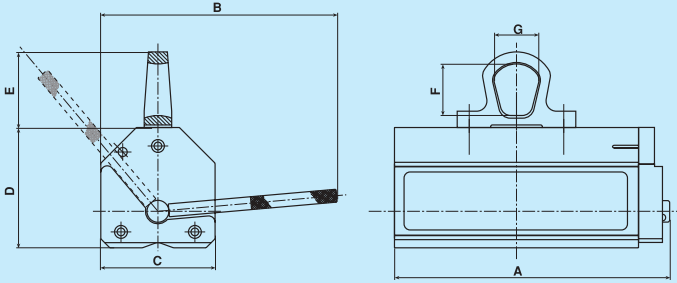


MaxX/VS Vertical System

The MaxX are also available in the VS version, that is complete with a vertical loading device.



Technical Characteristics

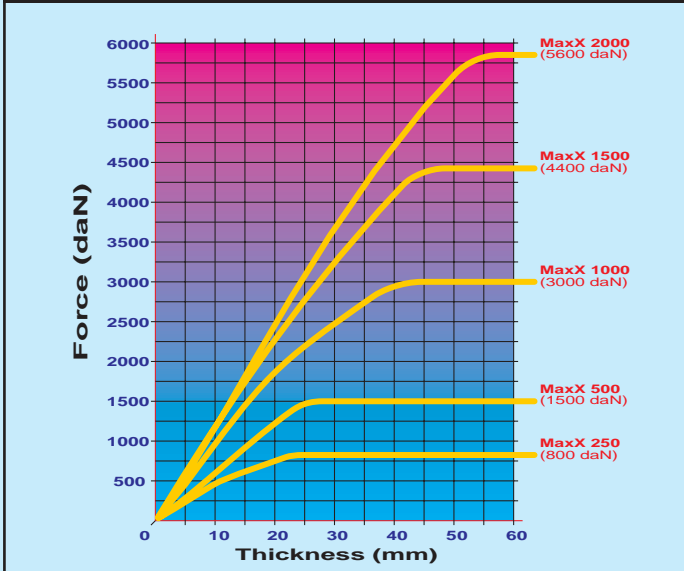


Model	Weight kg	Dimensions mm						
		A	B	C	D	E	F	G
MaxX 250	6	189	185	79	79	63	43	35
MaxX 500	15	249	235	106	101	88	60	52
MaxX 1000	34	342	316	133	131	88	60	52
MaxX 1500	66	383	457	166	171	122	87	64
MaxX 2000	80	457	457	166	171	122	87	64

Load Characteristics

Type of load	Model	Load max kg	Thickness min.mm	Length max mm	Load max mm
	MaxX 250	250	20	1500	-
	MaxX 500	500	25	2000	-
	MaxX 1000	1000	40	3000	-
	MaxX 1500	1500	45	3000	-
	MaxX 2000	2000	55	3000	-
	MaxX 250	100	10	1500	300
	MaxX 500	200	15	2000	400
	MaxX 1000	400	25	3000	450
	MaxX 1500	600	30	3000	500
	MaxX 2000	800	35	3000	600

Performance curves with changing load thickness (plate)

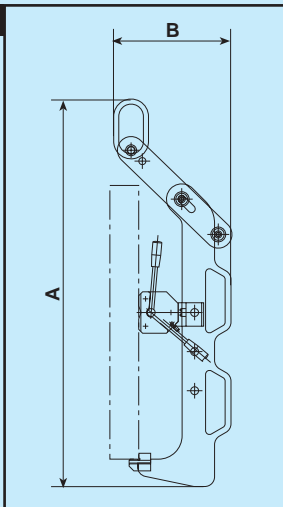


MVS

MaxX vertical loading system

Mod.	A	B	Weight
MVS	mm	mm	kg
250	750	250	12
500	1000	300	15
1000	1000	350	16

Recommended lifting capacity reduced by 30% compared of standard declared values.



Curves Power vs Load-Air Gap on common Fe 370B steel poles completely covered

